



GMT MONTHLY MEMBERSHIP PROGRESS REPORT

Results as of: 6/30/2018

Multiple District 202

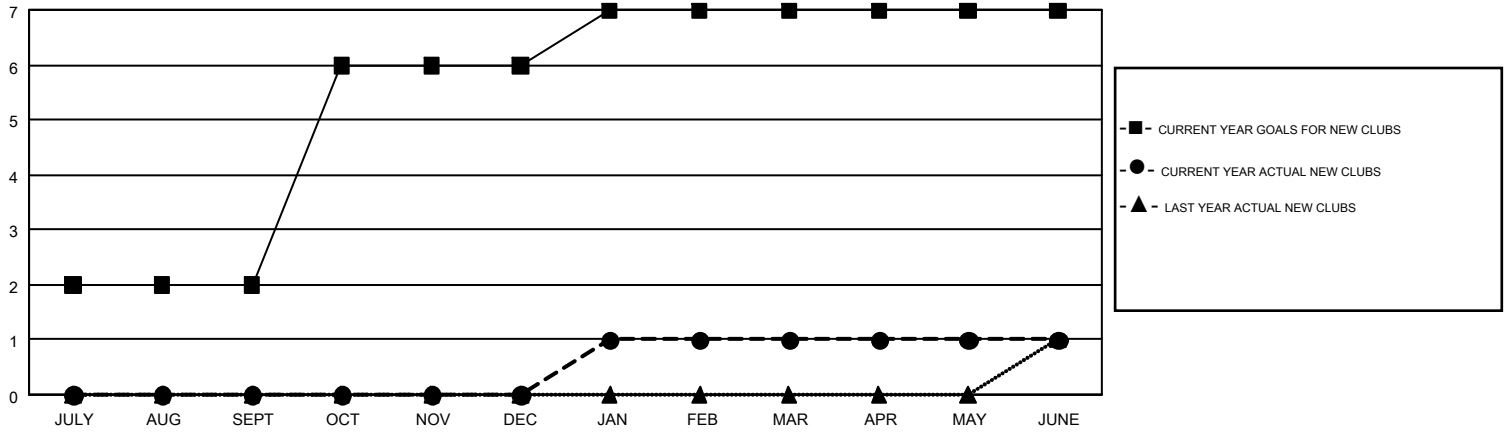
LOCATION: NEW ZEALAND

GMT: CLIFFORD HEYWOOD

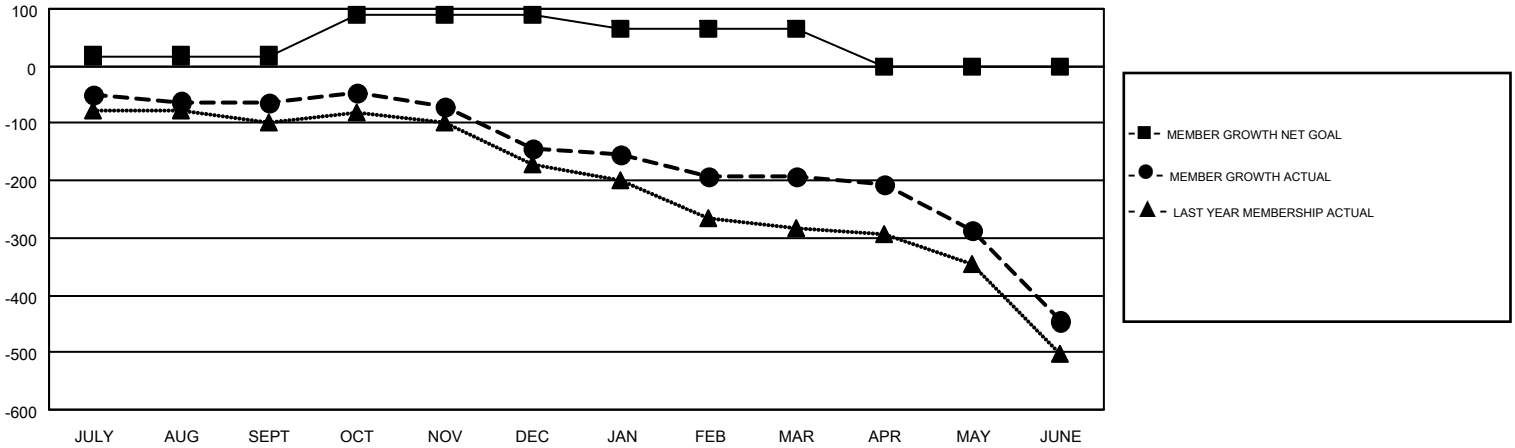
GMT CA 7

| Clubs | | | | Members | | | |
|-----------------------|---------------|-----------|---------------|-----------------------|------------------------|----------------------|--|
| RESULTS FOR 2017-2018 | | | | RESULTS FOR 2017-2018 | | | |
| QUARTER | NEW CLUB GOAL | NEW CLUBS | DROPPED CLUBS | QUARTER | MEMBER GROWTH NET GOAL | MEMBER GROWTH ACTUAL | DROPPED MEMBERS ACTUAL (including transfers) |
| JULY/AUG/SEPT | 2 | 0 | 4 | JULY/AUG/SEPT | 18 | 209 | 235 |
| OCT/NOV/DEC | 4 | 0 | 0 | OCT/NOV/DEC | 71 | 220 | 264 |
| JAN/FEB/MAR | 1 | 1 | 3 | JAN/FEB/MAR | -24 | 180 | 196 |
| APR/MAY/JUNE | 0 | 0 | 4 | APR/MAY/JUNE | -65 | 352 | 541 |

GOALS AND ACTUAL NEW CLUBS CUMULATIVE



GOALS AND ACTUAL MEMBERS CUMULATIVE



| | | |
|--|---|--|
| DROPPED CLUBS: 11 | 254 CLUBS OF 362 ADDED 1 OR MORE NEW MEMBERS | GENDER DISTRIBUTION MALE 6,598 (69.83%) FEMALE 2,850 (30.17%) |
| DROPPED MEMBERS DECEASED 148 CLUB CANCELLED 20 OTHER 1,068 TOTAL 1,236 | CLICK HERE FOR CUMULATIVE MEMBERSHIP DATA | TOTAL FAMILY UNIT MEMBERS 0 FAMILY MEMBERS PAYING HALF DUES 0 |